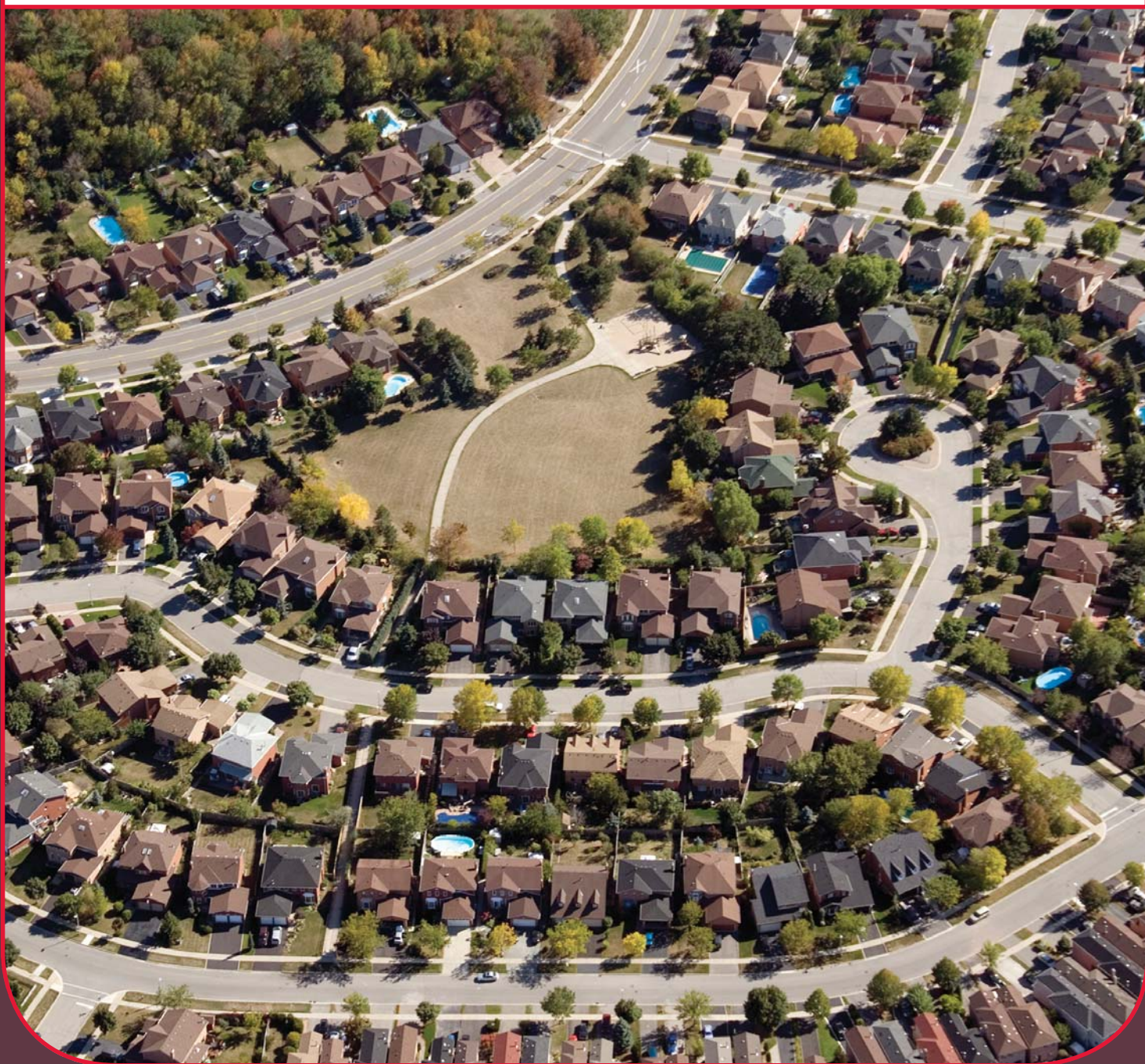


SMP | DATA COMMUNICATIONS
PART OF THE OPTICAL CABLE CORPORATION FAMILY

SMP DATA COMMUNICATIONS
HOME ACCESS™



HOME ACCESS™

CONTENTS:

- HA-2** Dual Access
- HA-4** MSDE Enclosures
- HA-6** HAX Boxes
- HA-8** Home Access™ Modules
- HA-13** Economy Distribution Solutions
- HA-14** Accessories & Patch Cords

As technological advances creep from the workplace to the home, the demand for residential structured wiring solutions has dramatically increased. In response to this rising need, SMP designed a residential system that offers a complete, cost-effective resolution to turning today's single family homes and apartment/condo complexes into tomorrow's smart homes.

From enclosure to outlet, SMP offers the Home Access™ product line, a comprehensive line of high-quality wiring products comprised of enclosures, modules and modular outlets. The Home Access line offers a structured wiring solution to help add value to the home while taking full advantage of the latest in electronic technology. By utilizing this system, customers obtain a convenient method for networking, customizing and distributing all of the electronic services in the home including voice, data, video, audio and security. All this managed from one central location.

By enabling the effective management of communication, entertainment and security from a centralized locale, the Home Access solution provides a completely flexible and customizable system to meet any "smart home" need. With the Home Access product line, Connecting Your Life never seemed so easy.



Dual Axcess™



Dual Axcess™ from SMP is the next evolution in residential structured cabling. In designing this product line, SMP

listened to its customers and designed a system that not only saves the installer time and money, but also addresses a problem that until now had no solution. The problem being that there was no way to test the voice line from the enclosure to the wall outlet and save the test data. Dual Axcess™ does this by incorporating a selectable configuration so each cable run can be selected as either a gigabit

channel or a hybrid 10/100 data and voice solution over one four pair cable. SMP's patent pending technology on both the outlet module and panel module allows the installer to test the cable run and save the data with standard field test equipment.

- Reduces 4-pair cabling and terminations by 50%
- Selectable configuration allows customer to choose either a stand alone gigabit channel for data applications or a hybrid 10/100 data and voice system
- Testable with industry standard cabling test equipment
- Category 5e component compliant
- Isolates incoming telephone service from networking hardware to protect Ethernet equipment

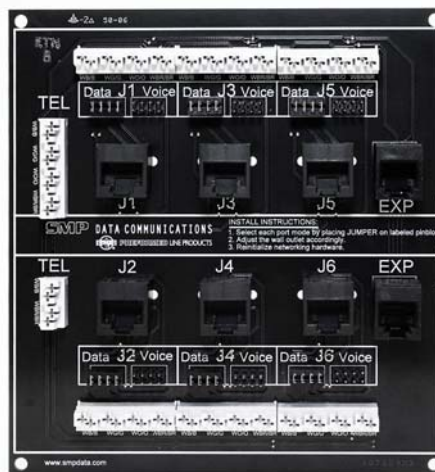
Dual Axcess™ Module

The Dual Axcess™ module is the center of this unique structured wiring system distributing both voice and data services from a central location in your home. Utilizing SMP's patent pending technology only one four pair cable per run is required to run both applications.

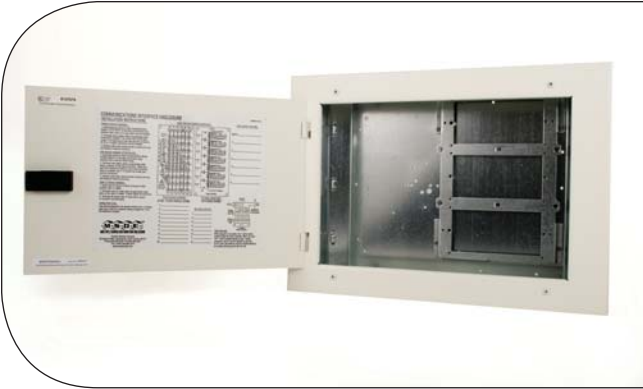
- Module fits on the three position bracket in any SMP Residential enclosure taking up 2 of the 3 positions.
- Enclosure modules are easily expandable to include more outlets for voice services
- Module is 568A wired

Dual Axcess™ Enclosure Module

Catalog Number	Description
DAX-6	Dual Axcess enclosure module 6 port, with telco interface and expansion ports



Home Axcess™ MSDE™ Dual Axcess™ Pre-Configured Enclosures – Ordering Guide					
Catalog Number					
MSDE	DX6	V		-	
			Video	Options	
			4 1x4, 1 Ghz, Bi-dir. Splitter	LCK Locking Cover	
			6 1x6, 1 Ghz, Bi-dir. Splitter	JCK 2-Jack Interface Cover	
			8 1x8, 1 Ghz, Bi-dir. Splitter	SCK Solid Cover	
			4S 1x4, 2 Ghz, Bi-dir. Splitter	AC Knockout w/ J-Box	
			6S 1x6, 2 Ghz, Bi-dir. Splitter	LAC LCK & AC Option	
			8S 1x8, 2 Ghz, Bi-dir. Splitter	JAC JCK & AC Option	



Ex: MSDEDX6V6-LCK = MSDE™ Enclosure, with (1) Dual Axcess™ module, 1x6 1Ghz video splitter with locking cover

Dual Axcess™ Outlet

The Dual Axcess™ Outlet provides both voice and data connection points throughout the home. The Dual Axcess Outlet has the same jumper technology as the enclosure module and also incorporates a slide feature on the back of the plate. This slide will expose the RJ11 opening on the plate when selecting the hybrid voice data solution, and covers the RJ11 opening if the gigabit option is selected. The outlet also has two open keystone ports for keystone adapters such as an F adapter for CATV or satellite connection. (See page WS-13 for available keystone adapters).

- Fits into standard faceplate wall opening
- Module is pre-installed on the faceplate with an RJ11 and RJ45 jack
- Two empty keystone ports for keystone adapters
- Outlet is 568A wired



Home Axcess™ Dual Axcess™ outlet

Catalog Number	Description
FPK-HAXDA-xx	Dual Axcess™ Faceplate with 2 additional KMJ ports
* Replace "xx" with color choice: 01= Office White, 12 = Bright White	

MSDE Enclosures

The MSDE, Multiple Service Distribution Enclosure, offered under the Home Axcess™ product line offers a complete and cost-effective solution for distributing high-speed data, communication and video services in multi-dwelling units, townhouses and small residences. With this centralized location, all household services can be easily distributed to multiple sites within the residence. This 10" Series enclosure is very versatile and can be completely customized to fit any demand.



- Standard 16" stud-wall installation (can also be turned to fit 12"-center wall studs)
- Module bracket to accommodate future needs
- Rugged steel construction, including flanged, latching door
- White powder-coat finish covers
- Knock-outs on top, bottom and side for easy cable entrance
- Flexible tie-down locations for cable management
- In-wall flush-mount design
- Pre-set wall thickness tabs for easy installations
- Can be ordered empty or pre-configured
- Includes J-box cutout
- UL® Listed

Specifications for System:

- TIA/EIA 568 Category 3 and 5 compliant
- UL 1863 Communication Circuit Accessory

Dimensions:

- 14.38"W x 10.62"H x 3.12"D

Home Axcess™ MSDE Enclosures

Catalog Number	Description
MSDET000D00V0	MSDE™ 10" Enclosure with 3 position bracket, hinged cover, and J-box cutout
MSDET000D00V0-AC	MSDE™ 10" Enclosure with 3 position bracket, hinged cover, and J-box kit
MSDE-BOX1	MSDE™ 10" Enclosure with 3 position bracket, no cover, and J-box cutout
MSDE-BOX2	MSDE™ 10" Enclosure with no bracket, no cover and J-box cutout
MSDE-DOOR	MSDE™ 10" Standard hinged cover

Home Axcess™ MSDE™ Pre-Configured Enclosures – Ordering Guide

Catalog Number									
MSDE	T		D		V		-		
		Voice		Data		Video		Options	
		406		A5		4		LCK	
		4x6 Voice Module		5 Port 568A, Cat 5e Data Board		1x4, 1 Ghz, Bi-dir. Splitter		Locking Cover	
		408		A6		6		JCK	
		4x8 Voice Module		6 Port 568A, Cat 5e Data Board		1x6, 1 Ghz, Bi-dir. Splitter		2-Jack Interface Cover	
		410		A7		8		SCK	
		4x10 Voice Module		7 Port 568A, Cat 5e Data Board		1x8, 1 Ghz, Bi-dir. Splitter		Solid Cover	
		606		A8		4S		AC	
		6x6 Voice Module		8 Port 568A, Cat 5e Data Board		1x4, 2 Ghz, Bi-dir. Splitter		Knockout w/ J-Box	
		608				6S		LAC	
		6x8 Voice Module				1x6, 2 Ghz, Bi-dir. Splitter		LCK & AC Option	
		610				8S		JAC	
		6x10 Voice Module				1x8, 2 Ghz, Bi-dir. Splitter		JCK & AC Option	
								SAC	
								SCK & AC Option	

Ex: MSDET406DA6V4-SCK = MSDE™ Enclosure 4x6 Voice, 6 port Data, 4 port Satellite Splitter with Solid Cover Door

MSDE Cover Options

No matter what the specification, the Home Access™ MSDE™ enclosures offer door options to meet any need. Whether selecting a simple locking door or a

tamper resistant solid cover, all MSDE™ cover options are built with durable steel construction and white powder coat finishes, ready to be shipped to the job site.

Locking Door Option

For extra security, this special latching door offers a Stainless Steel Locking option complete with key set.

Home Access™ MSDE™ Locking Door Options

Catalog Number	Description
MSDET000D00V0-LCK	MSDE™ 10" Enclosure with 3 position bracket, locking cover, and J-box cutout
MSDE-DOOR-LCK	MSDE™ Locking Steel cover



Tamper-Resistant Solid Cover Option

An optimal security environment can be achieved with this solid cover, which utilizes four tamper-resistant screws.

Home Access™ MSDE™ Tamper-Resistant Solid Cover Options

Catalog Number	Description
MSDET000D00V0-SCK	MSDE™ 10" Enclosure with 3 position bracket, tamper resistant solid cover, and J-box cutout
MSDE-DOOR-SCK	MSDE™ Tamper-Resistant Solid Cover



Tamper-Resistant Cover with Interface Jack Option

This solid cover offers heightened security using four tamper-resistant screws, but the RJ31X Security Jack and Telephone Test Jack can be easily accessed through exterior entry points using the Module Kit included.

Home Access™ MSDE™ Tamper-Resistant Cover with Interface Jack Options

Catalog Number	Description
MSDET000D00V0-JCK	MSDE™ 10" Enclosure with 3 position bracket, tamper resistant solid cover with Interface Jack, and J-box cutout
MSDE-DOOR-JCK	MSDE™ Tamper-Resistant Solid Cover with Interface Jack



HAX Boxes

20" Series

For residential installs needing a slightly larger consolidation point than the MSDE™ 10" Series, the Home Axcess™ product line offers a HAX 20" Series Enclosure as the next size up in creating a central location for residential structured wiring systems. The HAX 20" Series Enclosures are a convenient and attractive distribution box built to provide a safe and secure environment for all multi-media modules in a fully expandable format.



- Standard 16" stud-wall installation
- Rugged steel construction
- Flush-mounting tabs for quick and easy installation
- White powder-coat finish covers
- Supports flush-mount or surface-mount installations
- Multiple side-cable loops for orderly cable management
- Pre-installed brackets to accommodate future module needs
- Protected cable entry points with snap-in grommets
- Two J-box knockouts
- UL® Listed

Specifications for System:

- TIA/EIA 568 Category 3 and 5 compliant
- UL 1863 Communication Circuit Accessory

Dimensions:

- 14.075"W x 20.00"H x 3.12"D

Home Axcess™ 20" Series Enclosures

Catalog Number	Description
HAX-201	20" Enclosure with (1)-3 position bracket and solid cover
HAX-201H	20" Enclosure with (1)-3 position bracket and hinged cover
HAX-203	20" Enclosure with (3)-3 position brackets and solid cover
HAX-203H	20" Enclosure with (3)-3 position brackets and hinged cover
HAX-201BOX	20" Enclosure with (1)-3 position bracket, no cover
HAX-203BOX	20" Enclosure with (3)-3 position brackets, no cover
HAX-20COVER	20" Solid Cover
HAX-20HCOVER	20" Hinged Cover
HAX-LOCK	Lock Kit for Hinged Cover

HOME ACCESS™

HA-7

31" Series

Ideal for larger residential installs, the Home Access™ 31" Series Enclosure offers a solid foundation for building a superior structured wiring system. This system enclosure offers a larger surface mounting area for distributing household services and an expandable format for adding multi-media modules.

- Standard 16" stud-wall installation
- Rugged steel construction
- Flush-mounting tabs for quick and easy installation
- White powder-coat finish
- Supports flush-mount or surface-mount installations
- Multiple side-cable loops for orderly cable management
- Pre-installed brackets to accommodate future module needs
- Oversized, protected cable entry points with snap-in grommets
- Two J-box knockouts
- Grounding lug included
- UL® Listed

Specifications for System:

- TIA/EIA 568 Category 3 and 5 compliant
- UL 1863 Communication Circuit Accessory

Dimensions:

- 14.075"W x 31.25"H x 4"D

Home Access™ 31" Series Enclosures

Catalog Number	Description
HAX-301	31" Enclosure with (4)-3 position brackets, (2) J-box cutouts, and standard cover
HAX-301H	31" Enclosure with (4)-3 position brackets, (2) J-box cutouts, and hinged cover
HAX-BOX	31" Enclosure with (4)-3 position brackets, (2) J-box cutouts, and no cover
HAX-COVER	31" Standard Cover includes vents and four front cable cutouts
HAX-HCOVER	31" Hinged Cover includes cable ties on back and lock knockout
HAX-LOCK	Lock Kit for Hinged Cover
HAX-EXTND	2" extender frame for 31" Enclosure



Home Axxess™ Modules

Voice

SMP's Home Axxess™ Voice Modules provide the means to centralize all your incoming voice lines with a multitude of flexible and expandable options. These modular, 110-style modules make installation simple and ensure a superior level of performance. All Home Axxess™ Voice Modules offer the ultimate in flexible configurations and the assurance of true SMP quality performance.

- 110-style connector termination style for easy installations
- Color coded green for module recognition

- Easily fits into any Home Axxess™ or MSDE™ 3 position bracket
- Push pin mounting

APPLICATIONS

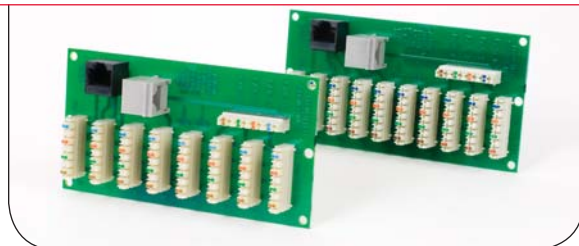
- 100BASE-TX Fast Ethernet
- 10BASE-T Ethernet
- 155 Mbps ATM
- 100 VG Any LAN
- 4/16 Mbps Token Ring
- Voice

Main Voice Modules

The Home Axxess™ Main Voice Modules provide the termination point for incoming telephone service. They can terminate up to four incoming telephone lines and

Home Axxess™ Main Voice Modules

Catalog Number	Description
HAX-TB8M	Home Axxess™ Main Voice Module, 4x8, Includes RJ31X and Expansion Jack
HAX-TB10M	Home Axxess™ Main Voice Module, 4x10, Includes RJ31X and Expansion Jack



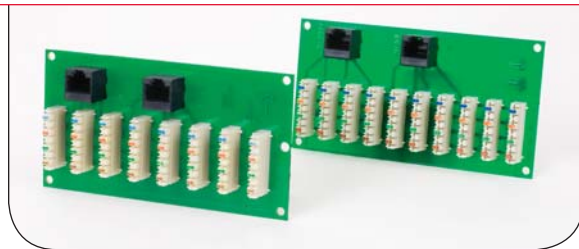
distribute the service to eight or ten different locations for phone, fax, or modem. A Security Interface Jack (RJ31X) is wired into Pair 1 to accommodate a dial-up alarm system.

Expansion Voice Modules

The Home Axxess™ Expansion Voice Module is linked to the Main Voice Module through the use of expansion jacks and jumpers to increase the number of locations by eight or ten.

Home Axxess™ Expansion Voice Modules

Catalog Number	Description
HAX-TB8E	Home Axxess™ Expansion Voice Module, 4x8, Includes Input and Expansion Jacks
HAX-TB10E	Home Axxess™ Expansion Voice Module, 4 x 10, Includes Input and Expansion Jacks

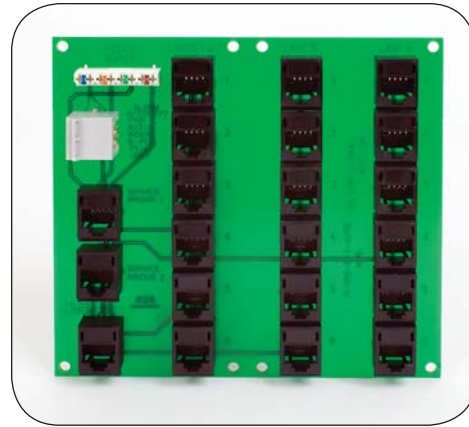


Voice Cross-Connect Module

The Home Access™ Voice Cross-Connect Module features RJ45 jacks that provide maximum flexibility to 18 different locations along with a built-in expansion jack for additional locations. Lines 1 and 2 are combined and Lines 3 and 4 are separated with an RJ31X Security Intercept Jack on Line 1. A service bridge quick-disconnect for all lines is included.

Home Access™ Voice Cross-Connect Module

Catalog Number	Description
HAX-TB6P	Home Access™ Voice Cross-Connect Module, 4x6, Includes RJ31X and Expansion Jacks

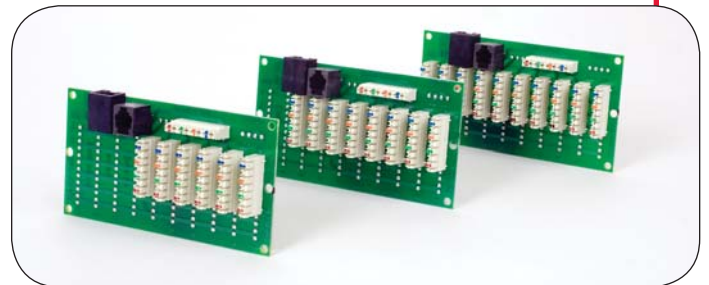


MSDE™ Voice Modules

To provide project specific solutions, the Home Access™ product line offers voice modules that are specifically designed for multi-dwelling environments featuring a non-expansion foot print. The MSDE™ Voice modules were created explicitly for the Home Access™ 10" Series Enclosures and offer the highest levels of performance. However, they can fit any enclosure using the Home Access™ 3 position bracket.

Home Access™ MSDE™ Voice Modules

Catalog Number	Description
MOD-T406	MSDE™ Voice Module, 4x6, Includes RJ31X and Network Test Jacks
MOD-T408	MSDE™ Voice Module, 4x8, Includes RJ31X and Network Test Jacks
MOD-T410	MSDE™ Voice Module, 4x10, Includes RJ31X and Network Test Jacks
MOD-T606	MSDE™ Voice Module, 6x6, Includes RJ31X and Network Test Jacks
MOD-T608	MSDE™ Voice Module, 6x8, Includes RJ31X and Network Test Jacks
MOD-T610	MSDE™ Voice Module, 6x10, Includes RJ31X and Network Test Jacks



Data

SMP's Home Access™ Data Modules allow for the termination of high-speed data service to multiple locations. These Category 5e (568A or 568B wired) modules provide exceptional performance using SMP's patented circuit board technology for true Category 5e compliance. In addition to high-speed internet distribution, the Home Access™ Data Modules can also be used in conjunction with a PBX system using the Home Access™ cross-connect module (HAX-TB6P).

- 110-style connector termination style for easy installations
- Color coded blue for module recognition
- Easily fits into any Home Access™ or MSDE™ 3 position bracket
- Push pin mounting

Home Access™ Data Modules

Catalog Number	Description
HAX-DA4	Home Access™ Data Module, Cat 5e, 568A Wired, 4 port
HAX-DA5	Home Access™ Data Module, Cat 5e, 568A Wired, 5 port
HAX-DA6	Home Access™ Data Module, Cat 5e, 568A Wired, 6 port
HAX-DA7	Home Access™ Data Module, Cat 5e, 568A Wired, 7 port
HAX-DA8	Home Access™ Data Module, Cat 5e, 568A Wired, 8 port
MOD-DB4	Home Access™ Data Module, Cat 5e, 568B Wired, 4 port
MOD-DB5	Home Access™ Data Module, Cat 5e, 568B Wired, 5 port
MOD-DB6	Home Access™ Data Module, Cat 5e, 568B Wired, 6 port
MOD-DB7	Home Access™ Data Module, Cat 5e, 568B Wired, 7 port
MOD-DB8	Home Access™ Data Module, Cat 5e, 568B Wired, 8 port

APPLICATIONS

- 1000BASE-T Gigabit Ethernet
- 100BASE-TX Fast Ethernet
- 10BASE-T Ethernet
- Broadband Video
- 100 Mbps TP-PMD
- 4/16 Mbps Token Ring
- 270 Mbps digital video
- 155/622 Mbps ATM
- Voice

Additional Data Modules

For residential solutions looking for the next level in data connectivity, SMP offers Category 6 and Fiber Optic termination options that easily accommodate the MSDE or HAX Series enclosures.

Home Access™ Category 6 and Fiber Termination Options for Enclosures

Catalog Number	Description
604AX	Home Access Adapter Plate, holds 4 SMP UMJ Style Jacks (see page WS-2 for UMJ Jacks)
HAX-BKT-MEDIA	Home Access Bracket, mounts to SMP 3 position bracket. Holds (2) 604AX Adapter Plates or (2) SMP Fiber Adapter Plate (See page FC-15 for Fiber Adapter Plates)



Video

SMP's Home Axcess™ Video Modules deliver a wealth of choices for all cable and satellite needs. Combining bi-directional capabilities perfect for cable modem/set-top box use, these modules deliver superior digital performance in a completely modular design.

- Bi-directional
- Completely digital
- May be mounted in multiple configurations

Passive Splitters – CATV

Home Axcess™ Passive CATV Splitters

Catalog Number	Description
MOD-V4	Home Axcess™ Passive CATV Splitter, Bi-directional, digital, 1 ghz, 4-way
MOD-V6	Home Axcess™ Passive CATV Splitter, Bi-directional, digital, 1 ghz, 6-way
MOD-V8	Home Axcess™ Passive CATV Splitter, Bi-directional, digital, 1 ghz, 8-way



Passive CATV Splitters – Technical Specifications

Frequency (MHz)	Insertion Loss (dB)				Isolation (dB)				Return Loss (dB)			
	5-50	50-750	750-860	860-1000	5-50	50-750	750-860	860-1000	5-50	50-750	750-860	860-1000
MOD-V4	6.9	7.2	7.7	8.4	28	32	28	24	25	26	20	25
MOD-V6	9.0	9.5	9.8	10.0	28	32	28	24	25	26	20	25
MOD-V8	10.2	10.8	11.2	13.0	28	32	26	26	22	25	22	20

Passive Splitters – Satellite

Home Axcess™ Passive Satellite Splitters

Catalog Number	Description
MOD-V4S2G	Home Axcess™ Passive Satellite Splitter, Bi-directional, digital, 2 ghz, 4-way
MOD-V6S2G	Home Axcess™ Passive Satellite Splitter, Bi-directional, digital, 2 ghz, 6-way
MOD-V8S2G	Home Axcess™ Passive Satellite Splitter, Bi-directional, digital, 2 ghz, 8-way



Passive Satellite Splitters – Technical Specifications

Frequency (MHz)	Insertion Loss (dB)					Isolation (dB)					Return Loss (dB)				
	15-47	950	1450	2025	2150	15-47	950	1450	2025	2150	15-47	950	1450	2025	2150
MOD-V4S2G	7.3	8.2	9.2	9.8	12.0	35	22	24	23	22	10	18	17	17	16
MOD-V6S2G	11.5	11.5	12.0	14.2	14.7	27	22	21	21	22	7.5	18	17	18	17
MOD-V8S2G	11.5	11.5	12.0	14.2	15.0	28	22	21	20	19	7.5	20	20	18	18

Video Amplified Splitter

The Home Axxess™ Video Amplified Splitter is the heart of the multi-room video distribution system. It can connect up to eight televisions to CATV, TV antennae or local modulated video signals such as satellite, VCR, DVD and security cameras. Multiple splitters can be linked to provide up to 15 output locations. For mounting in the Home Axxess™ 31" Series Enclosure, brackets are included.

Home Axxess™ Video Amplifier Splitter

Catalog Number	Description
HAX-V8A	Home Axxess™ Video Amplifier Splitter, Bi-directional, digital, 1 ghz, 8-way



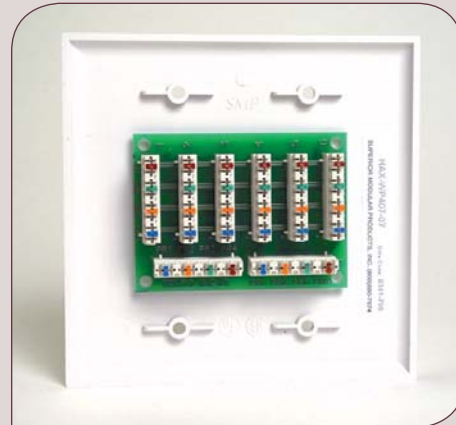
Video Amplifier Splitter - Specifications

Part Number	HAX-V8A
Forward	
Pass Band (MHz)	54-1000
Gain (Input to output) (dB) (type)	4.0
Return Loss (dB) (min)	18
Noise Figure	
54-860 MHz (dB) (max)	3.5
860-1000 MHz (dB) (max)	3.8
Isolation	
Output to Output 5-8 MHz (dB)	22
Output to Output 8-40 MHz (dB)	25
Output to Output 54-860 MHz (dB)	25
Output to Output 860-1000 MHz (dB)	20
Reverse	
Pass Band (MHz)	5.42
Return Path Loss (dB) (typ)	-11.5
Return Loss (dB) (min)	18

Economy Distribution Solutions

For applications requiring a more economical means of distributing household services, SMP developed the Home Axcess™ WP Series. These wall plates save time and money in any multi-dwelling, hotel or small residence project while continuing to deliver unsurpassed performance. Whether installing voice or voice and/or video, the WP Series wall plates are a cost-effective and versatile solution for quick disbursement of services.

- Cost-effective solution
- Flush mount
- Fits standard dual & quad-gang junction boxes and mud rings
- Saves valuable installation time
- Oversized double-gang or quad-gang wall plates



Home Axcess™ Economy Distribution Solutions

Catalog Number	Description
HAX-WP407	Home Axcess™ 4x7 Voice Module (only)
HAX-WP407-xx	Home Axcess™ 4x7 Voice Module with dual-gang plate
HAX-WP407V4-xx	Home Axcess™ 4x7 Voice Module, 1x4 Video Splitter with quad-gang plate
HAX-WP407V6-xx	Home Axcess™ 4x7 Voice Module, 1x6 Video Splitter with quad-gang plate
HAX-WP407V8-xx	Home Axcess™ 4x7 Voice Module, 1x8 Video Splitter with quad-gang plate

* Replace "xx" with color choice: 00 = Electrical Ivory, 01 = Office White, 07 = White, or 12 = Bright White

Accessories & Patch Cords

Home Axxess™ Networking

To complete any centralized residential system, SMP offers the Home Axxess™ Networking Switches. All Home Axxess™ Networking modules house status LED's for power, collision and activity. Each module supports Ethernet local area networks and complies with the IEEE 802.3 10BASE-T or 100BASE-T standards.

Home Axxess™ Switches

Catalog Number	Description
HAX-5100S	Home Axxess™ Switch, 5 port, with mounting bracket
HAX-8100S	Home Axxess™ Switch, 8 port, with mounting bracket



Home Axxess™ Mounting Brackets

Home Axxess™ Mounting Brackets

Catalog Number	Description	Mounting Space
HAX-BKT-WM	Surface Mount Wall Bracket (Holds Three Modules)	Mounts to any hard surface
HAX-BKT-ADVT	Mounting Bracket for ADEMCO® (Vista 20P and 15P) and DSC® (Power 832 and 632) panel	Equivalent to four modules
HAX-BKT-HAIO	Mounting Bracket for HAI Omni II and Pro II	Equivalent to six modules
HAX-BKT-HAIOLT	Mounting Bracket for HAI Omni LT	Equivalent to three modules
HAX-BKT-NTG	Mounting Bracket for Netgear Products	Equivalent to one module



HOME AXCESS™

HA-15

Home Axcress™ Line Splitter

The Line Splitter from Home Axcress™ allows for the connection of up to four devices to any 8-position 568A four-line jack without rewiring. This component is ideal for connecting phones, faxes, modems, and computers.

Home Axcress™ Line Splitter

Catalog Number	Description
HSME-3-006	Home Axcress™ Line Splitter, 4 port, with identification windows

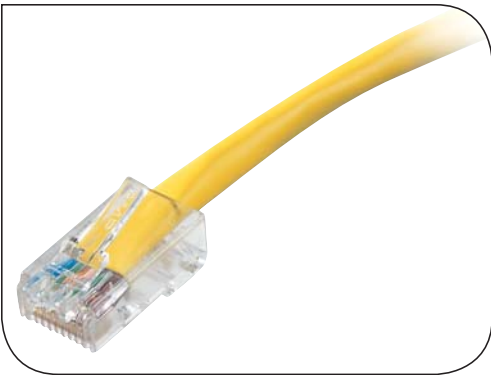


Residential Category 5e Patch Cords

For residential applications, the Home Axcress™ product line offers Category 5e compliant patch cords for connecting network devices to the structured cabling system. All Home Axcress™ Cat 5e patch cords are compliant with the latest standards, including TIA/EIA's 568-B.2, meeting a full range of patching performance requirements.

Home Axcress™ Category 5e Patch Cords

Catalog Number	Description
PC5EB07BY	Home Axcress™ Patch Cord, Cat 5e, 7 inch, with boot, yellow
PC5EB01BY	Home Axcress™ Patch Cord, Cat 5e, 1 foot, with boot, yellow
PC5EB07Y	Home Axcress™ Patch Cord, Cat 5e, 7 inch, without boot, yellow
PC5EB01Y	Home Axcress™ Patch Cord, Cat 5e, 1 foot, without boot, yellow

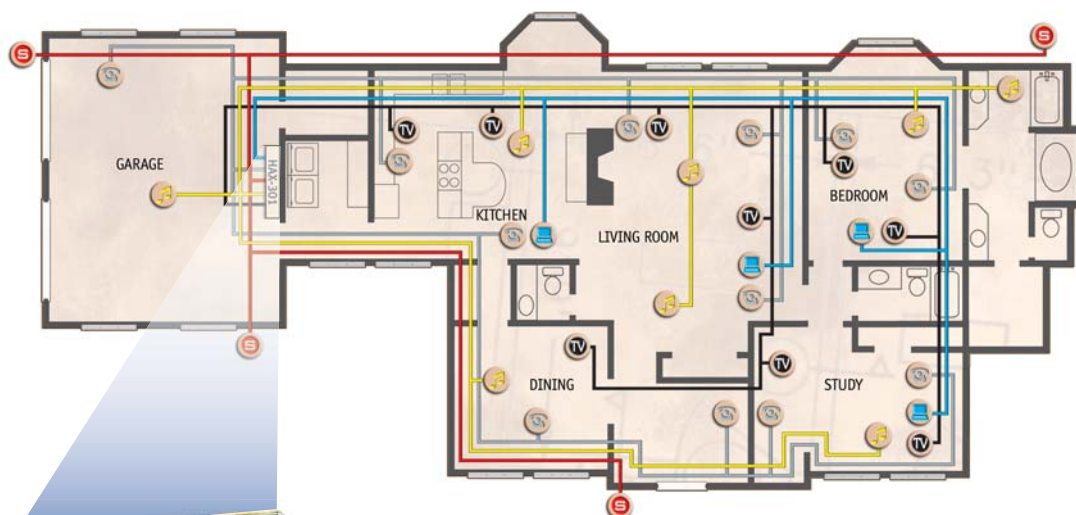


Home Axxess™

Residential Diagram

Structured wiring maximizes the potential of today's computers and communications devices, allowing you to expand, integrate and customize all of your electronic systems. It also provides the infrastructure you need to take advantage of future technologies, ensuring room for growth while increasing the resale value of your home.

- Provide whole-house audio/media system
- Integrated security systems
- Use multiple phone lines - voice, fax or modem
- Video monitoring
- Home Office
- Multiple/shared Internet access
- Network computers, printers and files
- Telephone / HDTV / printer / cable / fax / MP3 / VCR or DVD player / satellite / multimedia / entertainment system



HAX - 301



VIDEO MODULE

Video distribution for cable, satellite and antennae with option for local signals from a DVD player, VCR or security cameras



TELEPHONE MODULE

Voice distribution of four separate voice lines (telephone, fax, modem) to multiple locations with in the home



SECURITY SYSTEM

Provides monitoring of all entry exit doors with optional fire monitoring with the capability to sound a local alarm siren and call the security monitoring service



AUDIO MODULE

Provides distribution to indoor or outdoor speaker locations from a central home audio system



DATA MODULE

Provides capability to network personal computing devices within the home and to share a broadband, high-speed connection; i.e. cable modem or DSL service



MODULAR OUTLETS

Modular outlet solutions provide convenient access to all your multimedia services while creating flexible choices of how a room may be used now and in the future